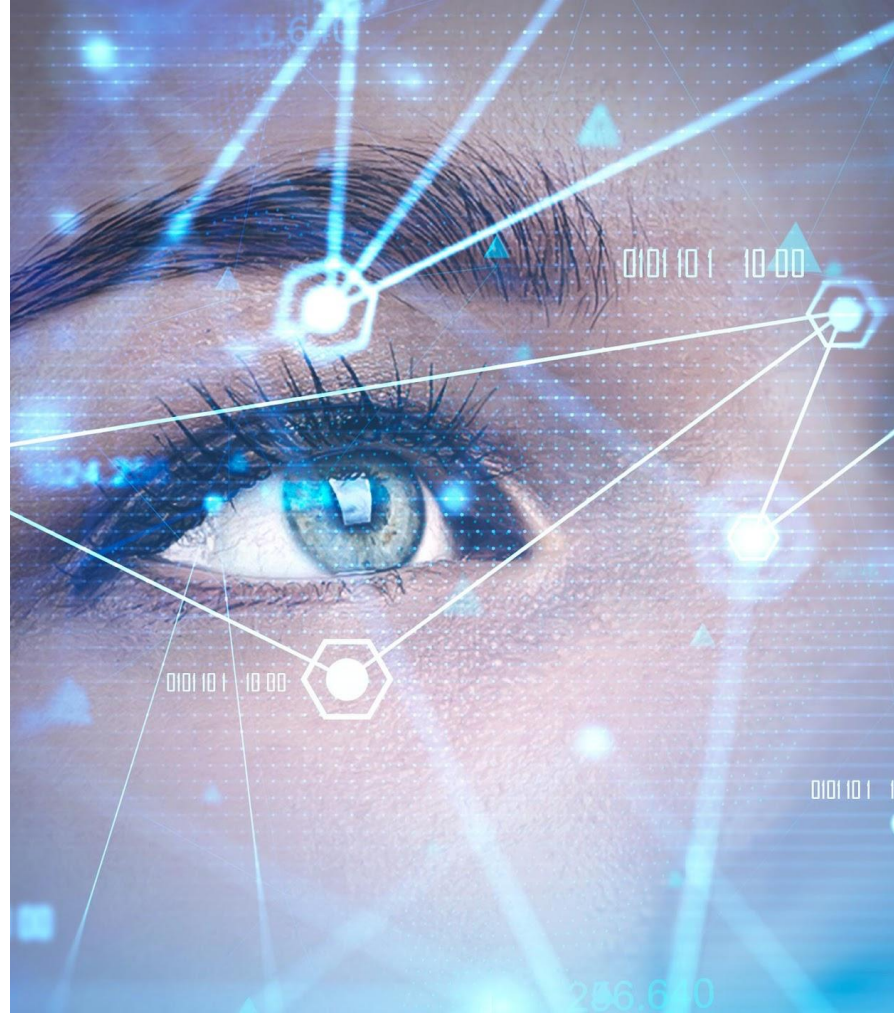




CREATING THE FUTURE OF **EARLY** DISEASE DETECTION **WITH AI**

Harnessing AI to Transform Healthcare





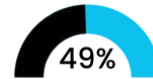
**Over 500 million people worldwide are living
with diabetes.**



**Over 30% develop Diabetic
Retinopathy**

**The leading cause of blindness
among working-age adults
globally**

**95% of cases of blindness due to DR
could have been easily prevented but
there are not enough ophthalmologists**



**of diabetic retinopathy diagnoses
are inaccurate**

A GLOBAL EPIDEMIC : OPHTHALMOLOGIST RATIO

Country	Diabetes population	Ophthalmologist
US	37M	18,900
Mexico	13M	3,300
India	77M	15,000
MENA	73M	7,400
Worldwide	537M	214,000



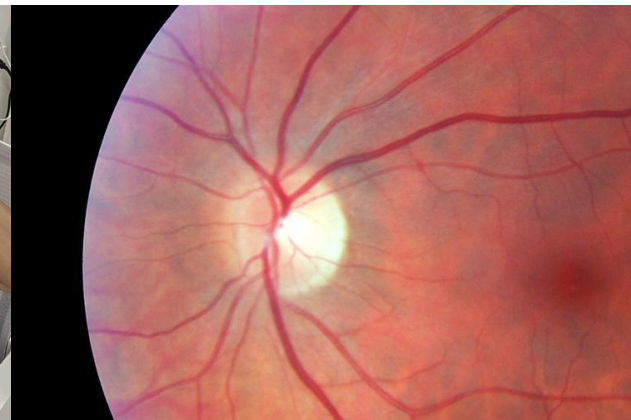
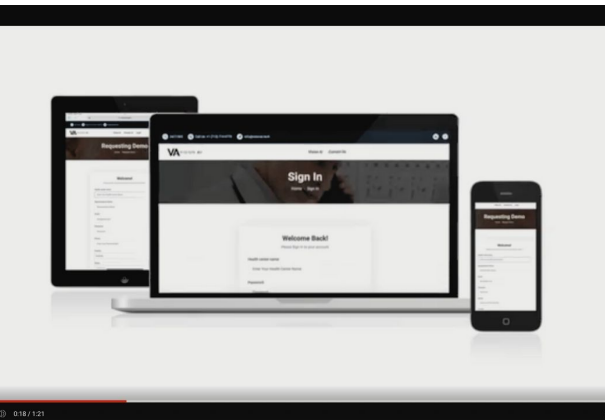
Ainnova Tech is bridging this gap with AI-powered diagnostics that deliver precise and reliable results, regardless of the geographical disparity

OUR SOLUTION



VisionAI is a powerful **AI-driven platform** designed to detect **diabetic retinopathy** and **other diseases** with **high accuracy** and speed using **retinal scans**.

Proprietary code and copyright.



HOW IT WORKS?

RETINAL EXAM

Report

Patient: Michael Johnson **Patient Ref ID:** 1038
Gender: Male **Analysis date:** 2024-01-13
Age: 35 **Analysis time:** 22:33:55
Diabetes: No **Service Center:** Medical Center

RESULTS

Analysis	Left Eye	Right Eye	Positivity %
Diabetic Retinopathy	Yes	No	82
Other Retinopathy	No	Yes	86
Normal Retina	No	No	90
Not Classifiable	n/a	n/a	n/a

Our advanced web platform is designed to quickly and accurately detect diabetic retinopathy and other retinal diseases during fundus imaging. With its powerful capabilities, it can identify these conditions with high accuracy in a matter of seconds. By enabling early detection of diabetic and rapid intervention, our platform plays a crucial role in preventing blindness and promoting overall eye health.

*****Referable with ophthalmologist**

EYE IMAGES



Left



Right

We recommend, based on the result of the system report, which indicates "other retinopathy", requesting a review with an ophthalmologist specializing in the retina. Additionally, in general, it is essential to maintain strict blood sugar control, schedule regular eye exams, control blood pressure and cholesterol, and adopt a healthy lifestyle that includes diet and exercise, as all of these factors can affect visual health.

HOW IT WORKS: VisionAI compares tens of thousands of retinal images validated by a retina specialist and returns a report in seconds.

THANK YOU FOR YOUR TRUST!

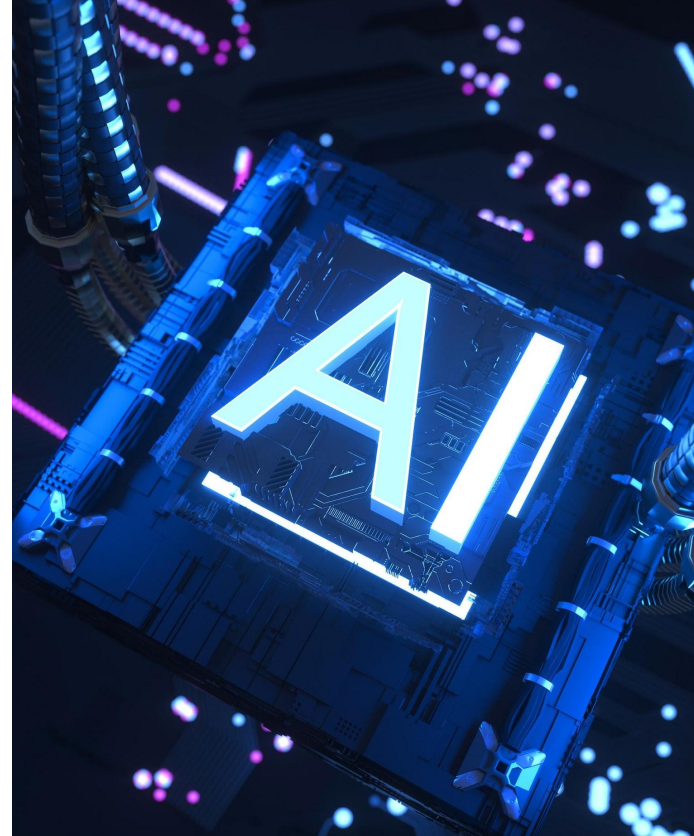
Powered By:



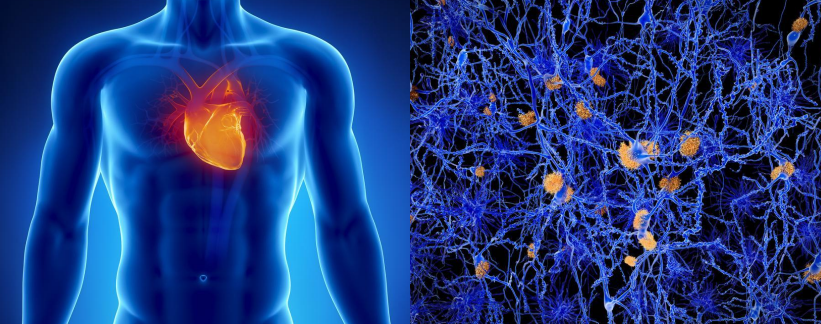
The VisionAI system does not replace clinical assessment or medical judgment, so it is always advisable to visit a qualified doctor, regardless of the result obtained by the report.

Our AI model was trained on thousands of validated retinal images and delivers results in seconds, empowering healthcare providers with immediate, actionable insights.

AI-powered segmentation prevents false-negative diagnoses by highlighting retinal damage.



96.6% Accuracy



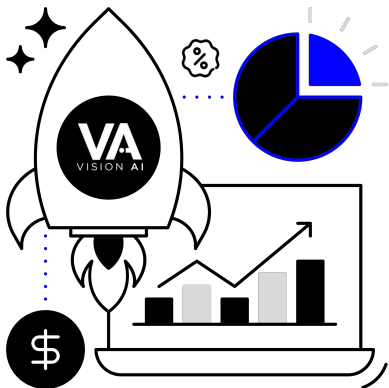
Cardiovascular Risk

**EXPANDING BEYOND
DIABETIC RETINOPATHY**

Alzheimer's Disease

Our commitment to innovation ensures that VisionAI will continue to evolve, integrating new AI-driven features that address a broader spectrum of diseases.

BUSINESS MODEL



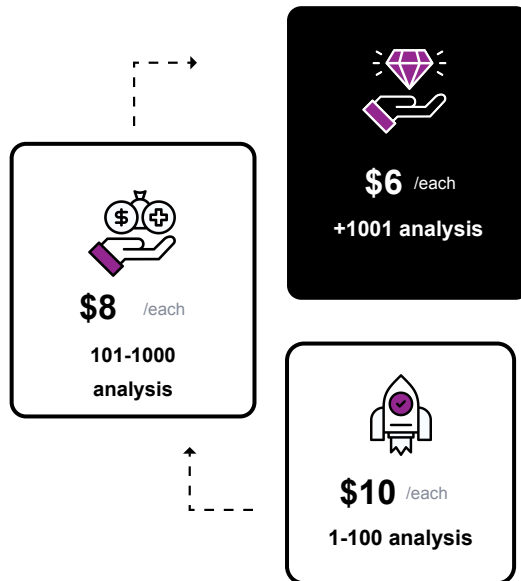
SAAS + Retinal Camera

Pricing for VisionAI analysis is based on monthly patient volume.

The price of the Retinal camera will be around \$2,500.

* Pricing can be negotiated upon amount of patients, average price for customers with higher volume is around \$6

PAY PER USE



Our AI-driven platform scales with your needs, offering cost-effective, high-precision diagnostics.

VERSATILE RETINAL CAMERA

Our **next-gen retinal camera** is designed for flexibility and user comfort, **seamlessly integrating with VisionAI** for precise retinal scans.

- **Scalable and Cost-Effective**
- **Automatic Image Capture**



Handheld Operation



Supportive Stand



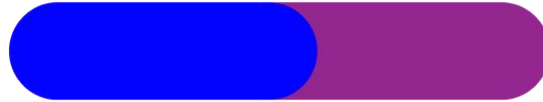
Head Support

MARKET SIZE

\$6.9 USD Billion
2021



\$67.4 USD Billion
2027



CAGR of
46.2%

The AI in Healthcare market is projected to grow from \$6.9 billion in 2021 to \$67.4 billion by 2027, at a CAGR of 46.2% during the forecast period.

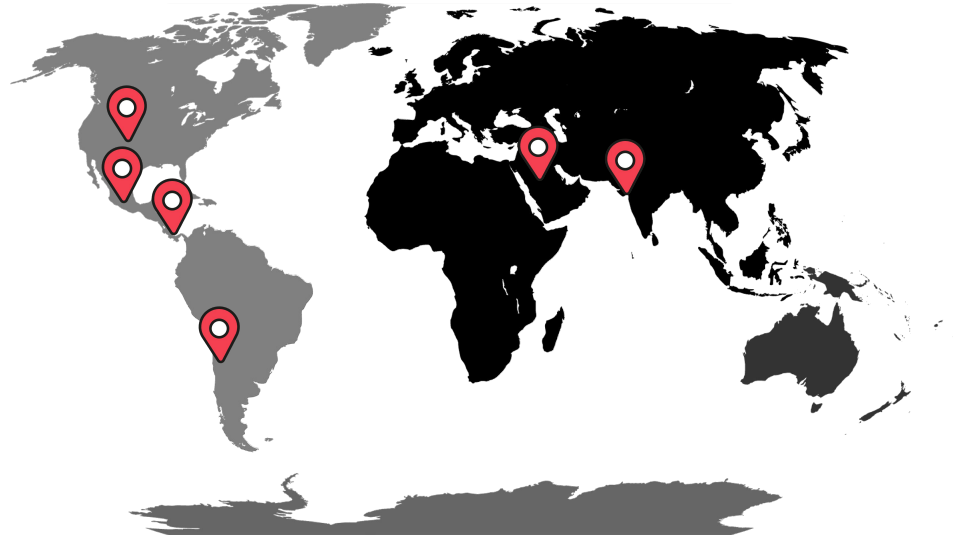


<https://www.marketsandmarkets.com/Market-Reports/artificial-intelligence-healthcare-market-54679303.html>

GO TO MARKET

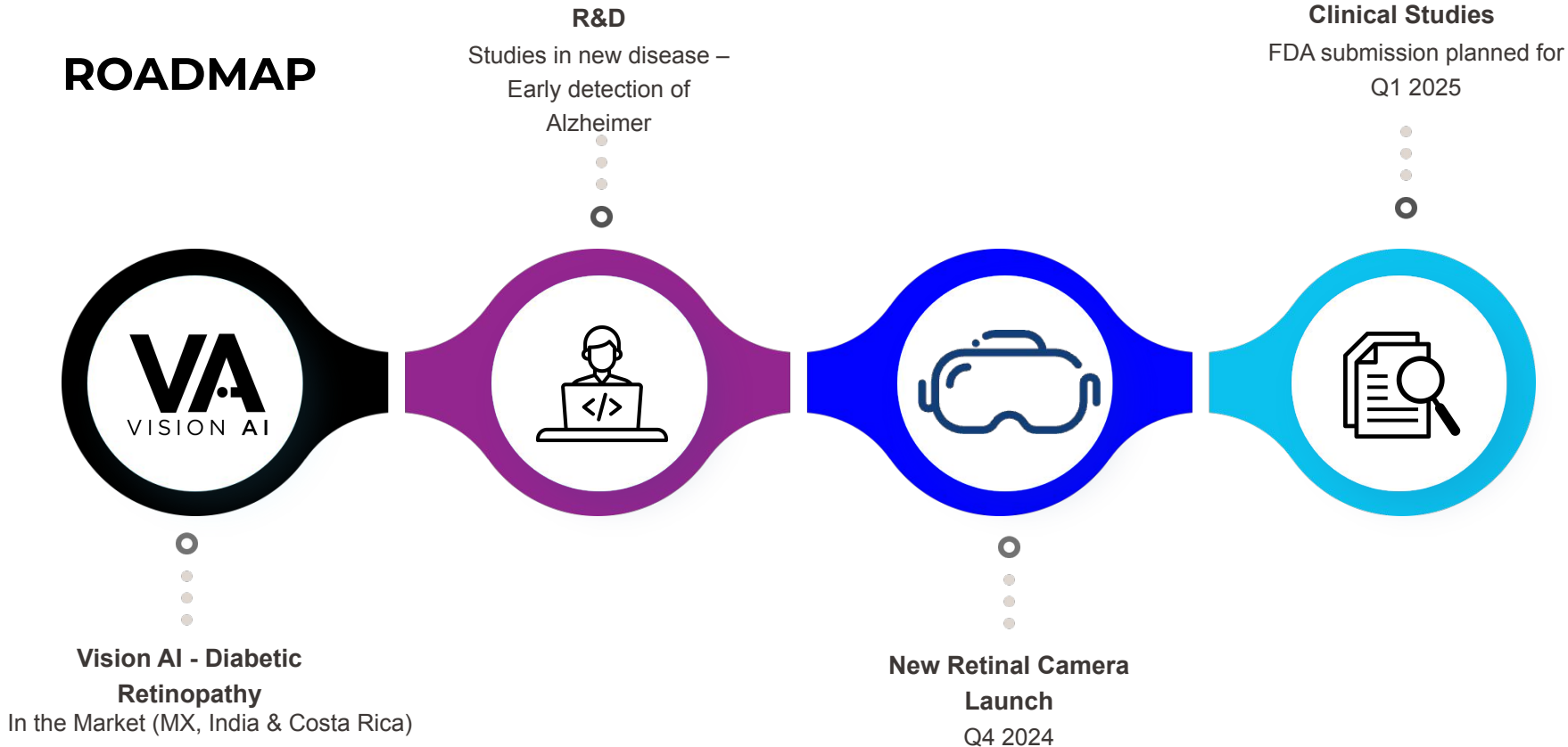
Primary care / Optometrists / Insurer-Owned Clinics

Leveraging AI, Ainnova Tech aims to penetrate these markets with scalable, adaptable solutions that meet diverse healthcare needs.



United States, Mexico, Latin America, MENA, Asia.

ROADMAP



COMPETITORS

COMPANY	Digital Diagnostics	Eyenuk	Aeye Health	Ainnova Tech
Country	USA	USA	Israel	USA
Funding	\$130 M	\$47.4 M	\$10 M	Over \$1.5 M
Hardware Need	Topcon +\$15k / Welch Allyn +\$11k	Canon +\$15k	Topcon +\$15k / Optomed + \$7.8k	Agnostic / Own Retinal device: \$2500 average
Price of service	\$25	License / \$15 per patient	\$12 per patient / Prepaid	\$5 / \$10 per patient / Based on volume
Key	Focus in Ophthalmologist / Optometrist – US markets (CPT 92229)	License with other retinal cameras / Optometrists and Ophthalmologist	Joint venture with Optomed (Retinal device) – Primary care - Optometrists	Primary care – Insurance companies with clinics - Modern low-cost device with AI integrated
Disease Detection	Diabetic retinopathy / Macular edema	Diabetic retinopathy, Other retinopathies, cardiovascular risk (R&D)	Diabetic retinopathy, Glaucoma, other retinopathies	Diabetic retinopathy, other retinopathies, Cardiovascular risk, atrial fibrillation (R&D), Alzheimer (R&D)



MANAGEMENT TEAM



CEO & CO-FOUNDER

Vinicio Vargas

- Master in Digital Transformation & Business Development
- Healthcare Innovator
- Strategic Leader



CTO & CO-FOUNDER

Rodrigo Herrera

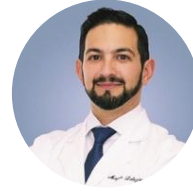
- Computer Science Engineer
- Artificial Intelligence Professor
- Master Big Data & Business Intelligence

MEDICAL ADVISORY BOARD



**Dr. Lihteh Wu –
Chief Medical
Officer**

- Ophthalmologist and retina specialist with training from Cornell University, Tulane University, and Rockefeller University.
- Affiliated with Mount Sinai Medical Center.
- Recipient of the Senior Honor Award from the American Academy of Ophthalmology and an inductee into



**Dr. Maziar Lalezary
– Retinologist /
Medical Advisor**

- Neuroscientist and ophthalmologist, graduated summa cum laude from UCLA. Completed a prestigious vitreo-retinal fellowship as a Gass Fellow at the Vanderbilt Eye Institute.
- Currently serving as an ophthalmologist and vitreo-retinal surgeon at Beverly Hills, California, and Cedars-Sinai Medical Center.



**Natalia Herrera,
PhD – Senior AI
Researcher**

- Computer Science Engineer with a PhD specializing in the application of AI to medical imaging, including MRI and retinal scans.



**Dr. Miguel Cruz –
Retinologist**

- **Vitreoretinal Surgery Fellow at the University of Toronto, specializing in advanced retinal surgery techniques.**

BOARD OF ADVISORS



Ian K. Gordon

- Board member & advisor
- Held senior positions such as Chief Operations Officer at BlueCross BlueShield North Carolina and Senior Vice President at Regence BlueCross BlueShield.
- Former President of Administrative Operations at Elara Caring.



Marcus Dantus

- Board member & advisor
- Marcus is a recognized serial entrepreneur and an angel investor, Shark of the TV show Shark Tank Mexico, with two decades creating, operating, investing, and advising startups in Mexico, United States, and the rest of Latin America. He currently leads Startup México, the most ambitious program to promote entrepreneurship and innovation in



Manuel Zúñiga

- Board member & Advisor
- Business consultant and former CEO of renowned companies, managing portfolios of over \$1.5 billion. 20+ years in leadership and C-Suite positions.



Marcelo Lebendiker

- Board member & advisor
- Economist and MBA (Tel Aviv University, Israel), President of the Investment Fund Venture Capital for Technology Companies, Invent Up, founder of the weekly newspaper El Financiero in Costa Rica, the newspaper Capital Financiero in Panama, and Unibe Clinic Hospital in Costa Rica.



Let us Keep in touch

About us



AINNOVA

AinnoVA Tech is a Nevada-based health tech startup headquartered in San Jose, Costa Rica, and Houston, Texas.

Our mission is to revolutionize early disease detection by harnessing the power of AI to create scalable, accessible healthcare solutions.



EMAIL ADDRESS

info@ainnovatech.com



PHONE NUMBER

US: +1 (713) 714-0779
CR: +506 2201 1486



WEBSITE

www.ainnovatech.com